

Your favourite, quality planing machine won't wear out so, don't discard "old faithful". Upgrade almost any model of Jointer, Thicknesser or Combination Machine with a High Performance

# Spiral Cutter Head

by Shelix® and CTS



## Create more with less wastage

The Tungsten knives cut any timber and any grain allowing you total freedom to select the exact material you want to work... with no tear-out.

## Cut production time by up to 30%

No chatter means less sanding – saving you a complete production process – the need for primary sanding is virtually eliminated.

## More than 10 times the life of high speed steel

Each cutter has 4 facets – so you get 4 times the life. Tungsten cutters are far more durable than steel.

## Never having to send the knives away for sharpening

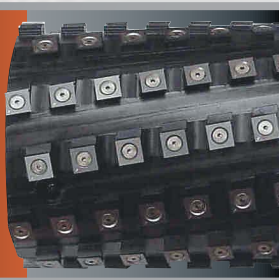
If you need to replace an insert, it's a 5 minute DIY job. Replacement cutters are only \$6.20 each – a fraction of the cost of replacement or sharpening steel knives.

## Reduced noise – work anytime you want!

With 40% less operating noise, you can work whenever and wherever you like without the worry of complaint by neighbors or concerns of workplace health and safety regulations.

### Special Custom Head

We can manufacture any **special head** to suit your machine's specifications. Simply supply your machine brand, model or cutter dimensions for a **no obligation free quote**.



## Spiral Cutter Retrofits currently available from Woodcraft Supplies:

### Thicknessers ex Taiwan/China

12.5" (318mm) suitcase, portable design  
Jet JWP-12.5, Carba-Tec, Woodman  
13" (330mm) Jet JPM13 Planer/Moulder  
13" (330mm) suitcase, portable design  
Jet-JWP-13 DX  
15" (375mm) motors above or in cabinet stand CT38, CT381  
16" (418mm) Jet, Rexon  
20" (508mm) motors above or in cabinet stand CT508  
22" (560mm) Powermatic M201  
25" (635mm) Powermatic P225

### Thicknessers & Jointers made in Australia

Durden T360, Durden T520  
Durden P600 (jointer) and UP10/600 (combination)  
Robinson 16" (400mm) jointer  
Woodfast 320 thicknesser  
Woodfast 6" and 10" jointers

### Brand Special Model Thicknessers

Barker 12"  
Hafco T382-15" Special  
Dewalt DW-734 and 735  
Leda WJ-20 and WJ-24  
Leda CT508, CT508G-HD  
Makita 2030N-300mm  
Woodman AP215, AP218, AP268

### Brand Special Model Jointers

C/Tec TB-6 Bench – 6" (150mm)  
C/Tec CTJ-150 – 6" (150mm)  
C/Tec CTJ-350 – 8" (208mm)  
C/Tec CTJ-360B-12" (303mm)  
Delta 6" (153mm) Model 37-195

Geetech 8" (208mm) SM0088JT  
Grizzly DJ20-8" (208mm) HD  
Hafco 6" (153mm) 67mm cutter  
Hafco 8" (208mm) P200H  
Hafco 8" (208mm) 75mm dia. cutter  
Jet 6" (153mm) 75mm cutter  
Jet 8" (208mm) Generic 75mm cutter  
Powermatic P60-8" (208mm)  
Powermatic PJ-882-8" HD jointer  
Powermatic P-1285-12" (305mm)  
Hafco 12" (303mm)

### Brand Imported Thicknessers & Jointers

Invicta/Delta 20", 25" thicknessers  
SCM Model Series 30, 50, S520, S63  
Wadkin 12" Jointer and  
24" Thicknesser

### Planer/Thicknesser (over/under) Combinations

C/Tec 10" x 6" (260x150mm)  
Dewalt 1150  
Elektra Beckum HC-260M  
Emco B20, 2000, B30  
Felder Series 30, 410, 500  
Hammer Series A31, 41, 51  
Jet JPT-260, JPT-310, JPT-410  
Knapp AD410  
Luna L38, L69  
Metabo HC 300W  
Mini-Max C26, Lab 300N, Lab 350, CU 300N, FS410  
Robland X260, X31, K31  
Scheppach HC260  
SCM Series 2000D, 2041FS, 30, 410  
Sherwood (Timbecon) 10" x 6"  
Woodfast WPT-310  
Zinken ZC21

Secure mail order service Australia-wide.

STOCKISTS OF A FULL RANGE OF SPIRAL CUTTER HEADS, SAND-FLEE, JOOLTOOL SHARPENERS, WIZARD METAL DETECTORS, SOY-GEL AND QUALITY FORSTNER BORING BITS

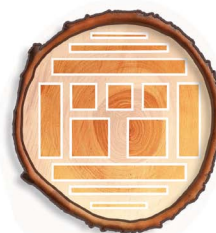
## R.D.G. INTERNATIONAL AGENCIES

T/A WOODCRAFT SUPPLIES

Phone: (07) 4129 4644 or 0418 184 048

Email: [rdg@bigpond.com](mailto:rdg@bigpond.com)

Web: [www.woodcraftsupplies.com.au](http://www.woodcraftsupplies.com.au)



**WOOD  
CRAFT  
SUPPLIES**